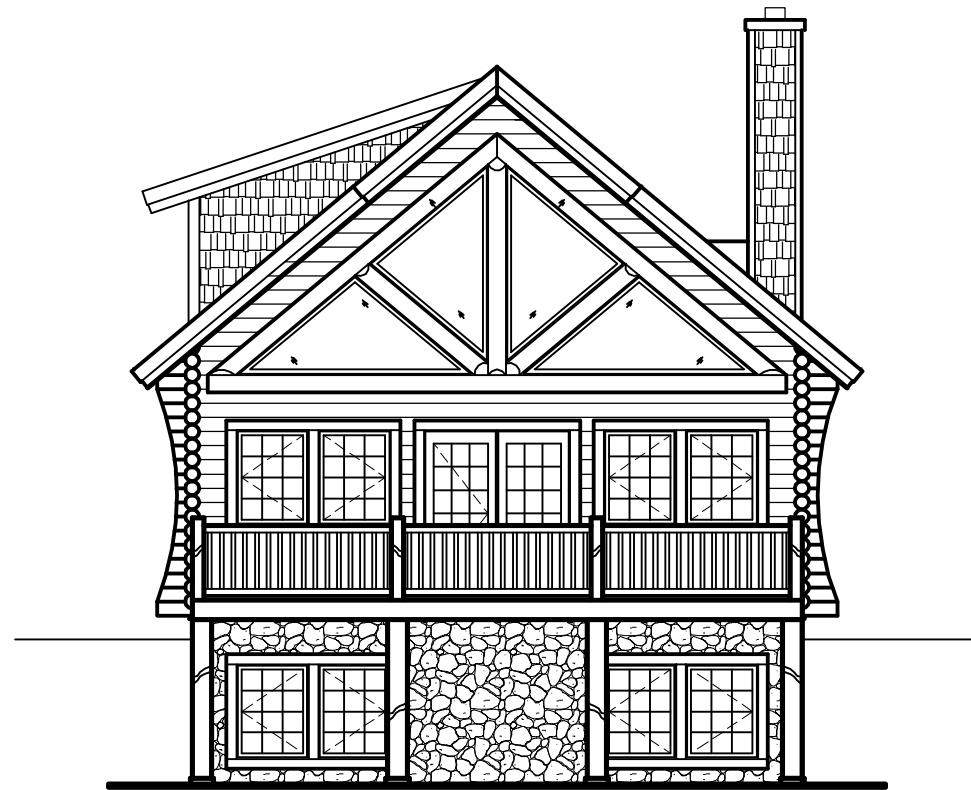


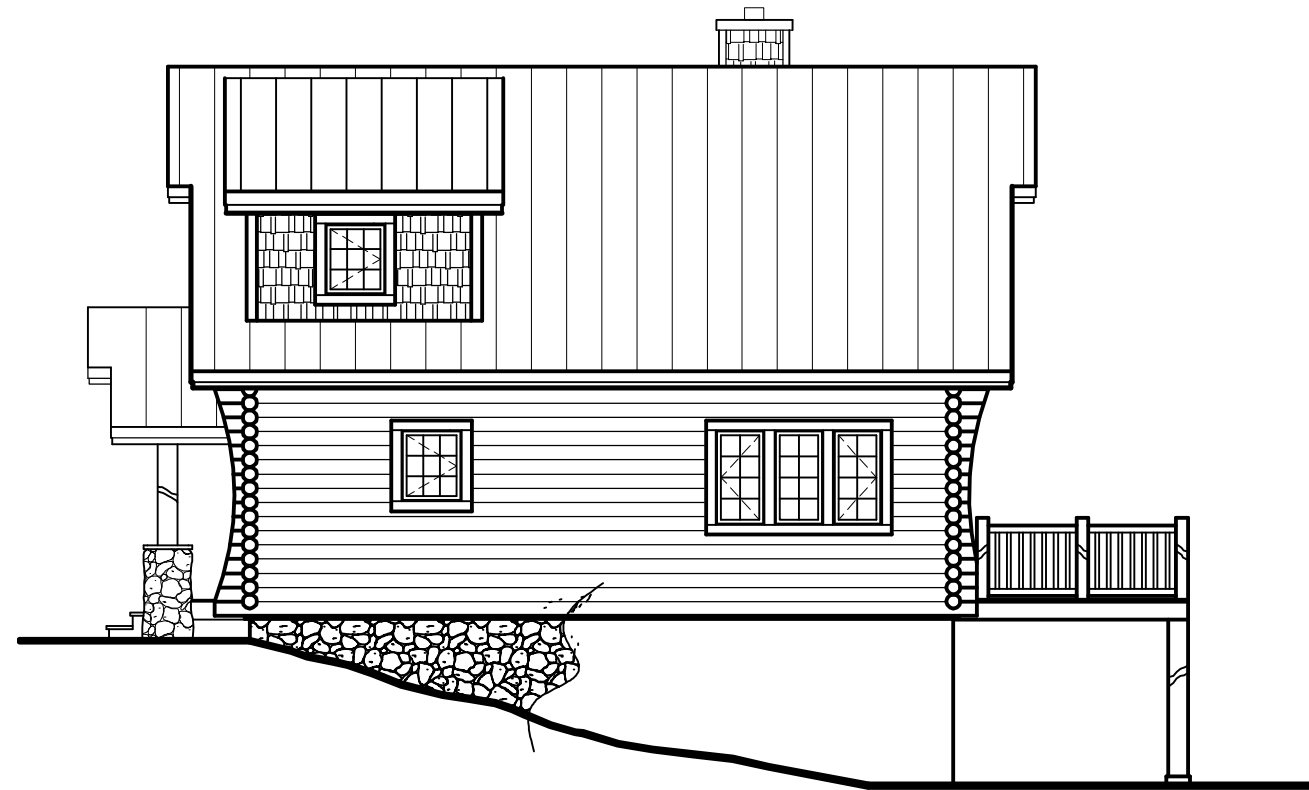
LEFT ELEVATION



FRONT ELEVATION



REAR ELEVATION



RIGHT ELEVATION

REVISIONS

JOB # 000026

BOYNE CABINS

SERIES: xxx

MODEL: EXTERIOR ELEVATION

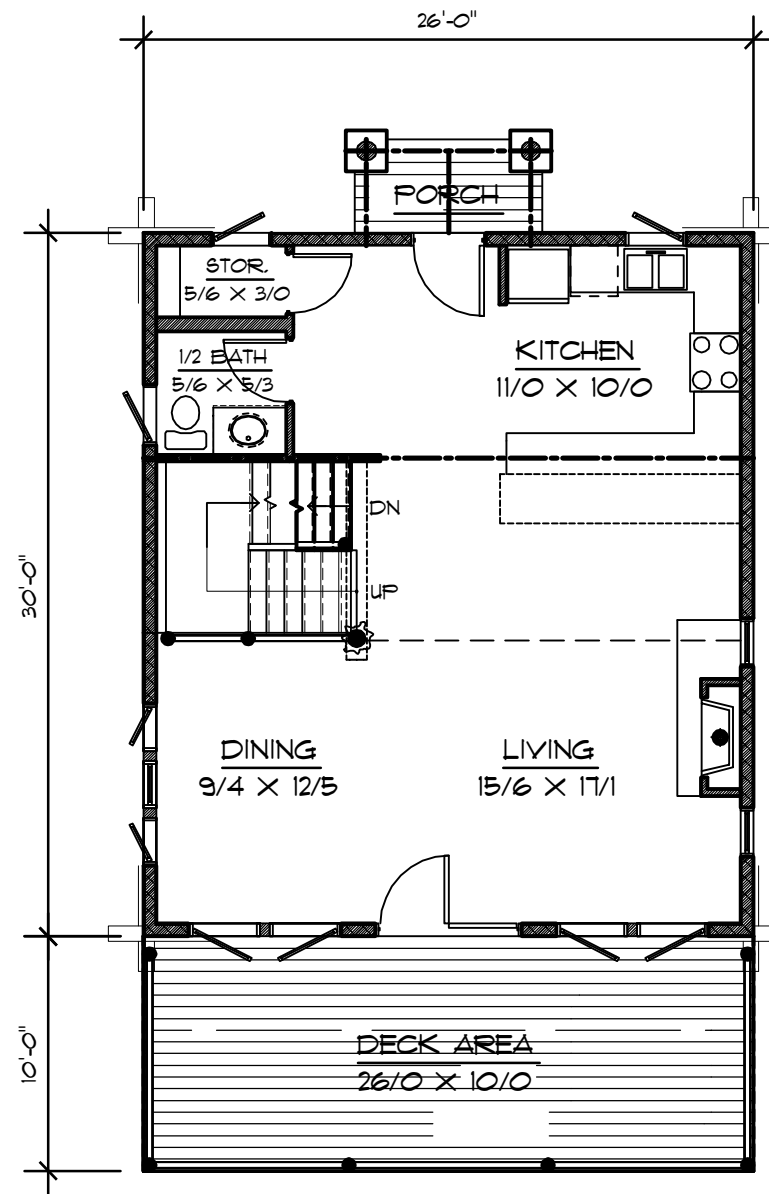
**TOWN & COUNTRY
CEDAR HOMES**

THIS DRAWING IS CONSIDERED A PROPRIETARY PRODUCT OF TOWN & COUNTRY CEDAR HOMES. IT IS NOT TO BE USED OR REPRODUCED IN ANY MANNER UNLESS AUTHORIZED IN WRITING BY TOWN & COUNTRY CEDAR HOMES.

SCALE:

DATE:

PAGE _



FIRST FLOOR PLAN

REVISIONS

JOB # 000026

BOYNE CABINS

SERIES:

xxx

MODEL:

LIVING: 780 SQ. FT.

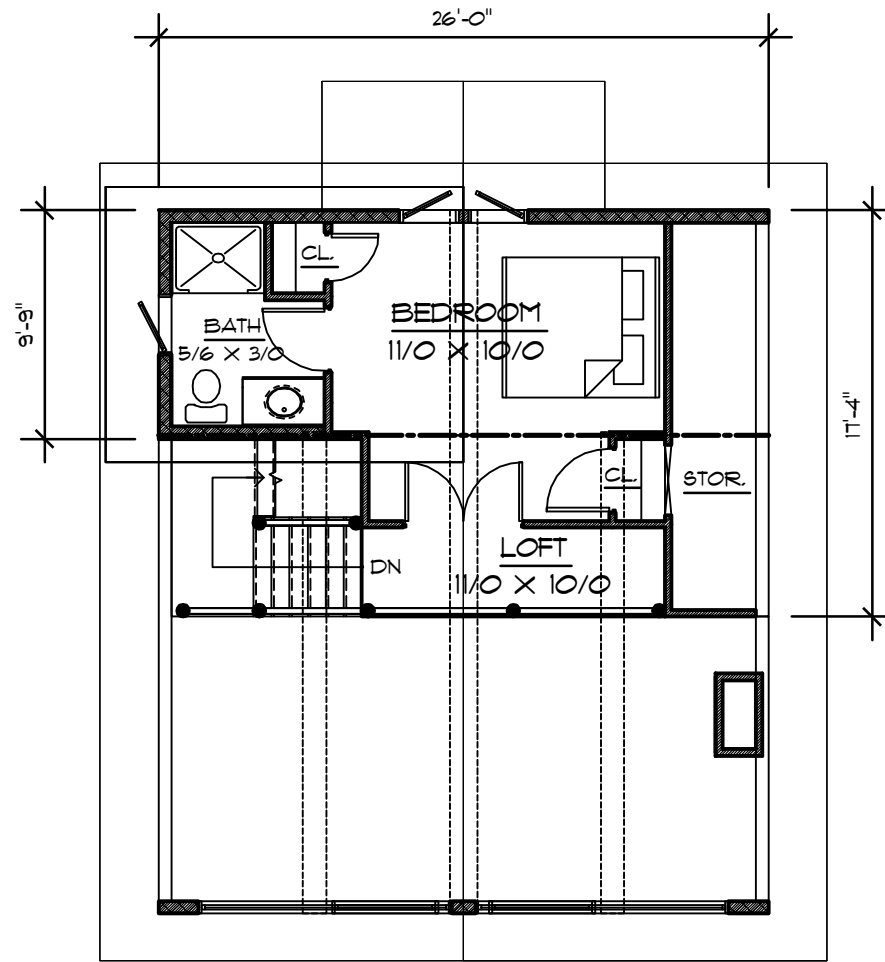
**TOWN & COUNTRY
CEDAR HOMES**

THIS DRAWING IS CONSIDERED A PROPRIETARY
PRODUCT OF TOWN & COUNTRY CEDAR HOMES.
IT IS NOT TO BE USED OR REPRODUCED IN
ANY MANNER UNLESS AUTHORIZED IN WRITING
BY TOWN & COUNTRY CEDAR HOMES.

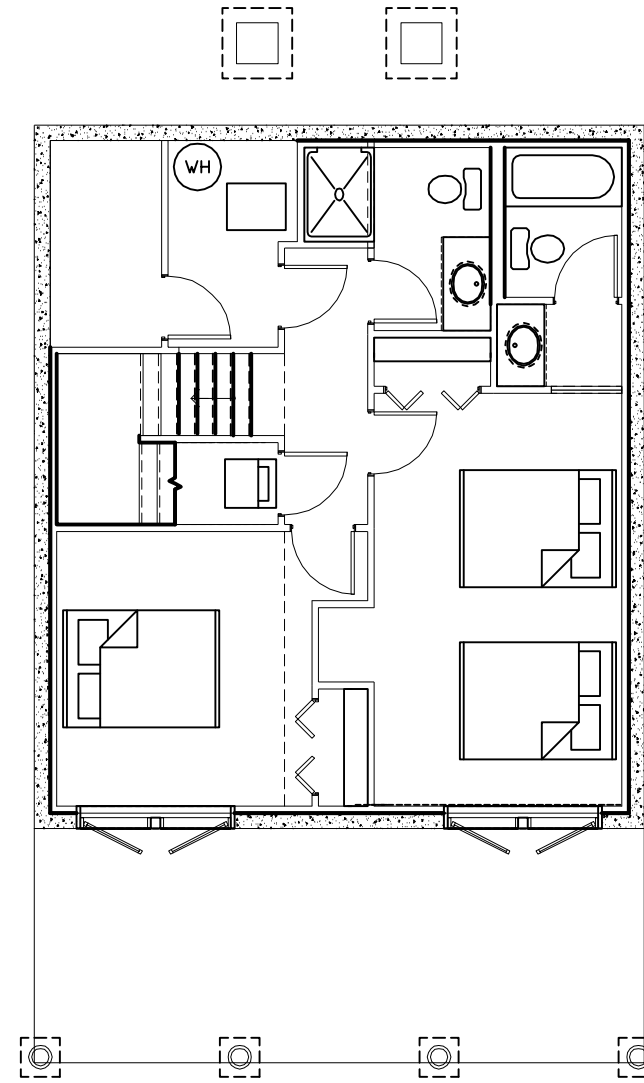
SCALE:

DATE:

PAGE _



SECOND FLOOR PLAN



LOWER LEVEL PLAN

REVISIONS

JOB # 000026

BOYNE CABINS

SERIES: xxx

MODEL:

SECOND FLOOR: 313 SQ.FT.
LOWER LEVEL: 780 SQ.FT.

**TOWN & COUNTRY
CEDAR HOMES**

THIS DRAWING IS CONSIDERED A PROPRIETARY PRODUCT OF TOWN & COUNTRY CEDAR HOMES. IT IS NOT TO BE USED OR REPRODUCED IN ANY MANNER UNLESS AUTHORIZED IN WRITING BY TOWN & COUNTRY CEDAR HOMES.

SCALE:

DATE:

PAGE _